

Avdel® Avseal® II

The Avdel Avseal® II sealing plug has been engineered for both high and low pressure hole sealing applications making Avdel's new Avseal sealing plug unique.

The rapidly installed two-piece sealing plug improves quality and safety in demanding applications while simplifying hole preparation and installation, reducing assembly costs. Available with an aluminium alloy sleeve and a steel stem. Avseal II can replace the current Avseal® plug in almost all existing applications



Key features and benefits

- Fully annealed sleeve – high sealing performance
- Hole fill capacity – improved seal and wider hole tolerance
- Larger hole tolerance – simplified hole alignment when automated placing is required
- Seal by compression of the sleeve – improves sealing with great hole fill capability over a wider hole tolerance
- Internal lock – flat nose tip and ease of use
- Improved stem retention – increased vibration resistance
- No locking ring formed by nose tip – standard equipment reduces preventative maintenance
- Low force special version – can be used in thin wall applications
- Tapered sleeve and stem – ease of entry into application and nose tips, suited to automated systems
- Shorter placed length, blind side protrusion reduced – use in restricted space or thin wall
- Can be easily modified – can suit specific applications
- Ease of placing with standard tooling – quality of seal is not operator dependant



Avdel® Avseal® 2961

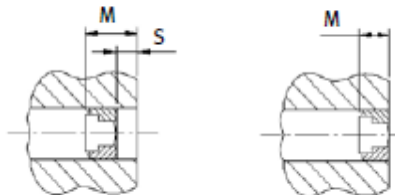
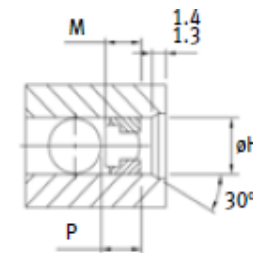
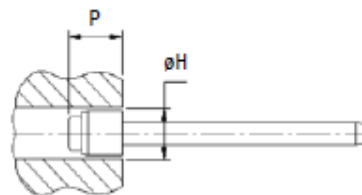
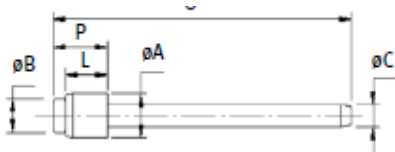
Avdel Avseal II are engineered for both low-pressure and high-pressure hole sealing applications.

Aluminium alloy sleeve, steel stem, 4mm – 12mm in 1mm increments in the high pressure version.

High pressure series

Sleeve: Aluminium Alloy*

Stem: Carbon steel**
hardened and tempered
Zinc plated, colourless
passivation with top seal



Taper hole entry only required for automated assembly.
Entrée de trou seulement exigée pour un assemblage automatisé.
Angesenktes Loch nur erforderlich bei automatischer Verarbeitung.
Foro rastremato d'ingresso richiesto solo per assemblaggio automatico.
El taladro escalonado solo se requiere para montaje automático.

Ø	O max.	ØB ref.	ØA max.	L max.	ØC ref.	ØH			P ¹⁾ req.	M ¹⁾		Part No/ref
						min.	max.	rec.		min.	max.	
4.0	41.4	3.0	3.9	4.1	1.9	3.9	4.3	4.1	6.50	2.81	4.32	02961-00405
5.0	42.2	3.8	4.9	5.0	2.2	5.0	5.4	5.0	7.14	3.95	5.70	02961-00506
6.0	50.1	4.5	5.9	6.0	2.6	6.0	6.4	6.0	8.53	4.30	8.73	02961-00607
7.0	51.1	5.4	6.8	6.9	3.0	7.0	7.4	7.0	9.78	5.15	9.17	02961-00708
8.0	51.9	6.1	7.8	7.9	3.6	7.8	8.4	8.0	11.05	7.18	9.41	02961-00810
9.0	53.0	6.9	8.8	8.5	3.9	8.8	9.8	9.0	12.70	7.64	9.84	02961-00911
10.0	53.4	7.8	9.8	10.0	4.4	9.8	10.8	10.0	14.00	8.77	13.00	02961-01012
11.0	61.5	8.6	10.8	11.9	4.8	10.8	11.8	11.0	15.07	TBA ²⁾	14.00	02961-01113
12.0	62.8	9.4	11.8	11.5	5.3	11.8	12.8	12.0	15.75	10.66	14.55	02961-01215

all dimensions in mm / en millimètres / alle Maße in mm / in millimetri / en milímetros

1) Values for use with a flat nose tip (except for 4.0 & 5.0 mm where only stepped nosetips are available):

- Add „S“ = 2 mm / 8 mm to „P“ and „M“ values when a 2 mm / 8 mm extended nose tip is used

Authorised UK distributors for:

Avdel® Avseal® 2964

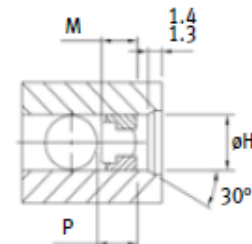
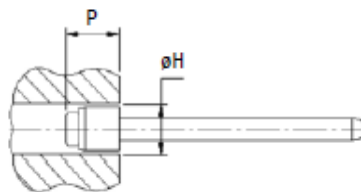
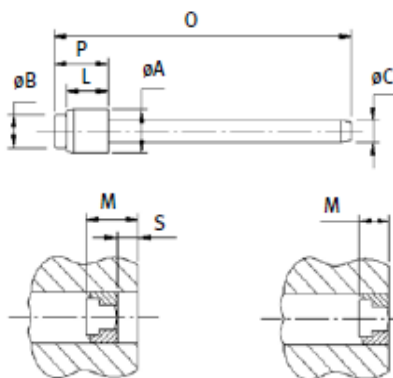
Avdel Avseal II are engineered for both low-pressure and high-pressure hole sealing applications.

Aluminium alloy sleeve, steel stem 8mm – 16mm in 1mm increments in low pressure version, primarily for automotive applications

Low pressure series

Sleeve: Aluminium Alloy*

Stem: Carbon steel**
hardened and tempered
Zinc plated, colourless
passivation with top seal



Taper hole entry only required for automated assembly.
Entrée de trou seulement exigée pour un assemblage automatisé.
Angesenktes Loch nur erforderlich bei automatischer Verarbeitung.
Foro rastremato d'ingresso richiesto solo per assemblaggio automatico.
El taladro escalonado solo se requiere para montaje automático.

ø	O max.	øB ref.	øA max.	L max.	øC ref.	øH			P ¹⁾ req.	M ¹⁾		Part No/ref
						min.	max.	rec.		min.	max.	
8.0	50.8	6.0	7.9	7.8	3.55	8.0	8.15	8.0	9.90	7.50	9.50	02910-10790
9.0	51.8	6.1	8.8	8.5	3.58	9.0	9.4	9.0	11.71	7.19	10.57	02964-00911
10.0	52.6	7.0	9.8	9.5	3.90	10.0	10.4	10.2	13.05	8.81	11.46	02964-01012
11.0	53.4	7.8	10.8	9.8	4.40	11.0	11.4	11.2	13.66	9.41	12.11	02964-01113
12.0	53.4	7.8	11.8	9.5	4.40	12.0	12.4	12.2	13.43	9.45	11.96	02964-01215
13.0	62.0	8.6	12.8	10.3	4.80	13.0	13.4	13.2	14.74	10.04	12.51	02964-01315
14.0	62.8	9.4	13.8	11.0	5.30	14.0	14.4	14.2	15.65	11.70	13.87	02964-01415
15.0	63.3	10.2	14.8	13.4	5.60	15.0	15.4	15.2	16.95	TBA ²⁾		02964-01520
16.0	64.8	11.0	15.8	12.6	6.00	16.0	16.4	16.2	18.04	13.88	16.00	02964-01620

all dimensions in mm / en millimètres / alle Maße in mm / in millimetri / en milímetros

1) Values for use with a flat nose tip (except for 4.0 & 5.0 mm where only stepped nosetips are available):
- Add „S“ = 2 mm / 8 mm to „P“ and „M“ values when a 2 mm / 8 mm extended nose tip is used

Authorised UK distributors for: