

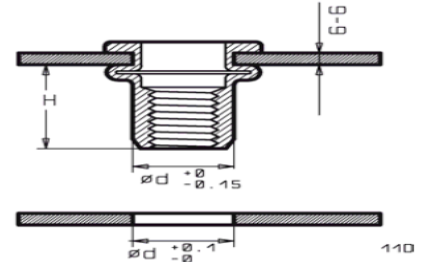
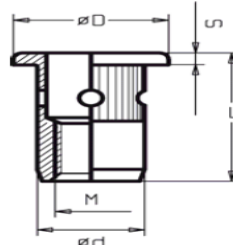


## BCT Large Flange Knurled High Strength Nutserts

DATA SHEET **D 203**

LARGE FLANGE HEAD  
Type: **hLF/KN**

**BCT** for high performance  
Steel: Bolt Metric Class **12.9**  
Alum: Bolt Metric Class **8.8**



**G-G**

other grip ranges can be manufactured on request

All dimensions in metric

Dimensions with **part number** in bold are stock items

M Thread	G-G Grip range	ød	L	øD	S	H Ca.	Steel 12.9 Part no.	Aluminium 8.8 Part no.	Brass Part no.	Stainless Part no.
<b>M3</b>										
<b>M4</b>										
<b>M5</b> No 10-32 No 10-24	0.7-2.5	8.0	15.0	11.0	1.00	10.0	<b>HT5M-25hLF/KN</b>	<b>AVAILABLE SOON</b>	--	--
	2.5-4.0	8.0	16.5	11.0	1.00	10.5	<b>HT5M-40hLF/KN</b>	<b>AVAILABLE SOON</b>	--	--
<b>M6</b> 1/4-20 1/4-28	1.0-3.0	9.0	19.0	13.0	1.50	11.5	<b>HT6M-30hLF/KN</b>	<b>AVAILABLE SOON</b>	--	--
	3.0-5.0	9.0	21.0	13.0	1.50	11.5	<b>HT6M-50hLF/KN</b>	<b>AVAILABLE SOON</b>	--	--
<b>M8</b> 5/16-18 5/16-24	1.5-4.0	11.0	23.0	16.0	1.50	14.0	<b>HT8M-40hLF/KN</b>	<b>AVAILABLE SOON</b>	--	--
	4.0-6.0	11.0	25.0	16.0	1.50	14.0	<b>HT8M-60hLF/KN</b>	<b>AVAILABLE SOON</b>	--	--
	6.0-8.0	11.0	27.0	16.0	1.50	14.0	<b>HT8M-80hLF/KN</b>	<b>AVAILABLE SOON</b>	--	--
<b>M10</b> 3/8-16 3/8-24	2.0-5.0	14.0	28.0	19.0	2.00	18.0	<b>HT10M-50hLF/KN</b>	<b>AVAILABLE SOON</b>	--	--
	4.5-7.0	14.0	30.0	19.0	2.00	18.0	<b>HT10M-70hLF/KN</b>	<b>AVAILABLE SOON</b>	--	--
	6.5-9.0	14.0	32.0	19.0	2.00	18.0	<b>HT10M-90hLF/KN</b>	<b>AVAILABLE SOON</b>	--	--

Authorised UK distributors for: