

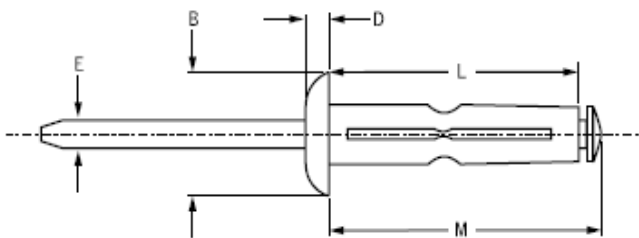
# Avdel® Klamp-Tite® BAPK



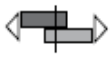

The Avdel non-structural Klamp-Tite aluminium rivet has a large blind side bearing area making it an ideal rivet for use in thin sheet or low strength materials. The Klamp-Tite rivets, both structural and non-structural are ideal for plastic assembly.



## Key features and benefits

- Split tail formation spreads the tail bearing load/clamp load on the rear sheet
- Ideal for use in thin sheet materials offering high resistance to pull-out loads
- Multi-grip capability accommodates wide variations in material thickness
- Ideal for use in very soft or brittle materials
- Retained stem provides very strong, vibration resistant joints avoiding problems caused by loose stems



Ø					M	B	D	L	E			Part No/ref
	nom.	min.	max.	min.								
4.8 (3/16")	1.27	6.35	5.18	5.31	25.40	11.30	2.37	22.72	2.90	1.3	1.7	BAPK-64
	4.75	9.53			27.81			25.13				BAPK-66
	9.53	14.27			30.94			28.25				BAPK-69
6.4 (1/4")	1.52	6.35	6.40	6.65	26.47	14.22	3.00	23.50	3.84	1.9	2.6	BAPK-84
	4.75	9.53			29.64			26.67				BAPK-86

all dimensions in mm / en millimètres / alle Maße in mm / in millimetri / en milímetros

1) typical values / valeurs moyennes / typische Werte / Valori tipici / resistencias máximas recomendadas

Authorised UK distributors for: