

## **Avdel® Hemlok®**

The Avdel Hemlok rivet is a structural breakstem fastener with exceptional shear and tensile strength and a large blind side bearing area against the rear sheet. Hemlok has a large neatly formed tail portion which spreads the clamp force across an extended bearing area, meaning both shear and tension performance are impressive. Hemlok are the strongest of the blind fastener range.

Available in a 6.4 diameter and manufactured in steel zinc plated or aluminium.



### Key features and benefits

- Exceptional shear and tensile strength
- Large blind side bearing area against the rear sheet
- Interference lock formed by a splined stem
- Spreads the tail bearing/clamp load on the rear sheet
- Ideal for thin sheet materials
- Provides strong, vibration resistant joints
- No damage, electrical problems or rattling due to loose stems

# Avdel® Hemlok® 2221

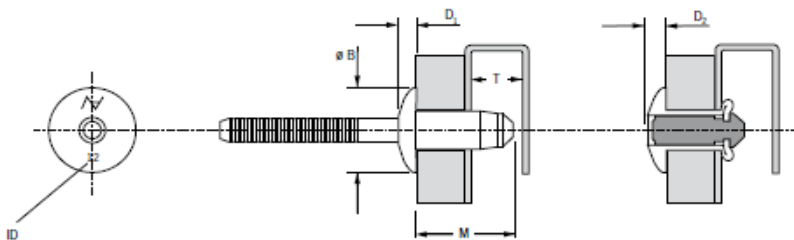
Avdel Hemlok – Dome head, Steel body and stem, zinc plated and Cr3 passivated.



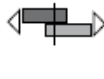

Available in 6.4 millimetre diameter.

### Protruding head

Body: medium carbon boron steel\*  
Zinc plated  
Clear trivalent passivated

Stem: medium carbon boron steel\*  
Zinc plated  
Clear trivalent passivated



ø					ID	M	ø B	D <sub>1</sub>	T	D <sub>2</sub>			Part No/ref
	nom.	min.	max.	min.									
6.4 (1/4")	1.50	3.50	6.7	6.9	12	13.7	13.4	2.7	12.2	3.4	10.5	8.8	02221-00812
	2.80	4.80			13	15.0							02221-00813
	3.35	5.35			14	15.6							02221-00814
	4.80	6.80			15	17.0							02221-00815
	6.80	8.80			17	19.0							02221-00817
	7.50	9.50			18	19.7							02221-00818
	8.80	10.80			19	21.0							02221-00819
	10.80	12.80			21	23.0							02221-00821

all dimensions in mm / en millimètres / alle Maße in mm / in millimetri / en milímetros

Authorised UK distributors for:

# Avdel® Hemlok® 2241

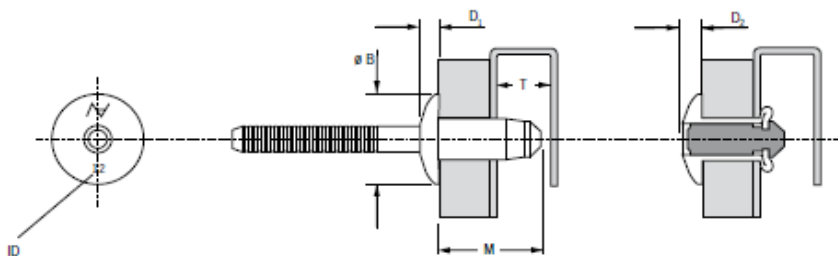
Avdel Bulbex – Dome head, Aluminium body and stem.



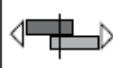

Available in 6.4 millimetre diameter.

### Protruding head

Body: Aluminium alloy\*  
(2.5 % Mg)  
Natural

Stem: Aluminium alloy\*\*  
Natural



ø					ID	M	ø B	D <sub>1</sub>	T	D <sub>2</sub>			Part No/ref
	nom.	min.	max.	min.									
6.4 (1/4")	1.50	3.50	6.7	6.9	12	13.7	13.4	2.7	12.2	3.4	5.0	2.67	02241-00812
	2.80	4.80			13	15.0							02241-00813
	3.35	5.35			14	15.6							02241-00814
	4.80	6.80			15	17.0							02241-00815
	6.80	8.80			17	19.0							02241-00817
	8.80	10.80			19	21.0							02241-00819
	10.80	12.80			21	23.0							02241-00821

all dimensions in mm / en millimètres / alle Maße in mm / in millimetri / en milímetros

Authorised UK distributors for: