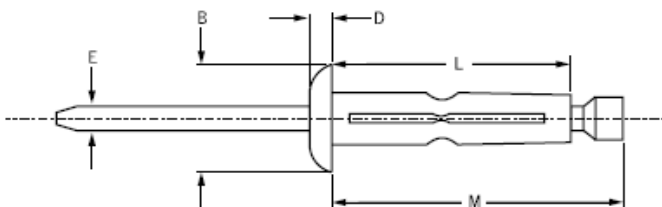




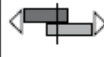

Avdel® Klamp-Tite® BAPKTR

The Avdel structural Klamp-Tite aluminium rivet has a split tail formation providing a very large blind side bearing against the rear sheet and is ideal for use in thin sheet or low strength materials. The Klamp-Tite contains a visible mechanical lock to give extra strength to the joint.

Key features and benefits

- Split tail formation spreads the tail bearing load/clamp load on the rear sheet
- Ideal for use in thin sheet materials offering high resistance to pull-out loads
- Multi-grip capability accommodates wide variations in material thickness
- Ideal for use in very soft or brittle materials
- Stem is mechanically locked into body providing very strong, vibration resistant joints
- Visible lock for quick and easy inspection
- Optional underhead washer provides a weather-proof seal



Ø					M	B	D	L	E			Part No/ref
	nom.	min.	max.	min.								
4.8 (3/16")	1.27	6.35	5.18	5.31	26.42	± 0.4	ref.	22.61	2.62	3.1	2.0	BAPKTR-06-04
	4.75	9.53			28.70			25.02				BAPKTR-06-06
	9.53	14.27			31.75			28.45				BAPKTR-06-09
	14.27	19.05			36.57			33.02				BAPKTR-06-12
6.4 (1/4")	1.52	6.35	6.40	6.65	33.02	± 0.4	ref.	23.50	3.45	5.5	3.1	BAPKTR-08-04
	4.75	9.53			36.07			26.67				BAPKTR-08-06

all dimensions in mm / en millimètres / alle Maße in mm / in millimetri / en milímetros

1) typical values / valeurs moyennes / typische Werte / Valori tipici / resistencias máximas recomendadas

Option:

A synthetic rubber washer can be ordered to fit under protruding head fasteners e.g.: BAPKTR-06W-06

Authorised UK distributors for: