

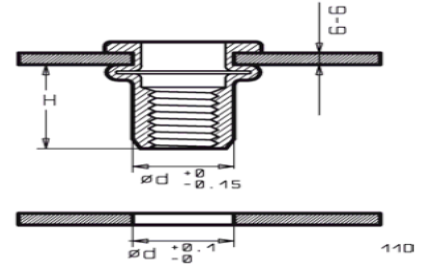
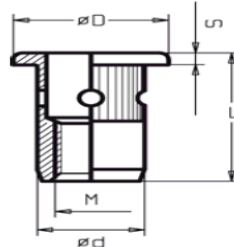


BCT High Strength Large Flange Knurled Nutserts

DATA SHEET **D 203**

LARGE FLANGE HEAD
Type: **hLF/KN**

BCT for high performance
Steel: Bolt Metric Class **12.9**
Alum: Bolt Metric Class **8.8**



G-G

other grip ranges can be manufactured on request

All dimensions in metric

Dimensions with **part number** in bold are stock items

M Thread	G-G Grip range	ød	L	øD	S	H Ca.	Steel 12.9 Part no.	Aluminium 8.8 Part no.	Brass Part no.	Stainless Part no.
M3										
M4										
M5 No 10-32 No 10-24	0.7-2.5	8.0	15.0	11.0	1.00	10.0	HT5M-25hLF/KN	AVAILABLE SOON	--	--
	2.5-4.0	8.0	16.5	11.0	1.00	10.5	HT5M-40hLF/KN	AVAILABLE SOON	--	--
M6 1/4-20 1/4-28	1.0-3.0	9.0	19.0	13.0	1.50	11.5	HT6M-30hLF/KN	AVAILABLE SOON	--	--
	3.0-5.0	9.0	21.0	13.0	1.50	11.5	HT6M-50hLF/KN	AVAILABLE SOON	--	--
M8 5/16-18 5/16-24	1.5-4.0	11.0	23.0	16.0	1.50	14.0	HT8M-40hLF/KN	AVAILABLE SOON	--	--
	4.0-6.0	11.0	25.0	16.0	1.50	14.0	HT8M-60hLF/KN	AVAILABLE SOON	--	--
	6.0-8.0	11.0	27.0	16.0	1.50	14.0	HT8M-80hLF/KN	AVAILABLE SOON	--	--
M10 3/8-16 3/8-24	2.0-5.0	14.0	28.0	19.0	2.00	18.0	HT10M-50hLF/KN	AVAILABLE SOON	--	--
	4.5-7.0	14.0	30.0	19.0	2.00	18.0	HT10M-70hLF/KN	AVAILABLE SOON	--	--
	6.5-9.0	14.0	32.0	19.0	2.00	18.0	HT10M-90hLF/KN	AVAILABLE SOON	--	--

Authorised UK distributors for: