



BCT High Strength Thin Sheet Knurled Nutserts

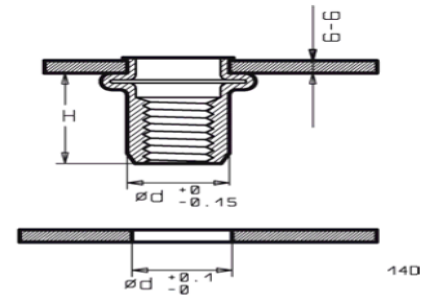
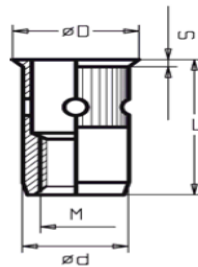
DATA SHEET D215

SMALL COUNTERSUNK HEAD
Type: **hTS/KN**

BCT for high performance
Steel: Bolt Metric Class **12.9**
Alum: Bolt Metric Class **8.8**

G-G

other grip ranges can be manufactured on request



All dimensions in metric

Dimensions with part number in bold are stock items

M Thread	G-G Grip range	ød	L	øD	S	H ca.	Steel 12.9 Part no.	Aluminium 8.8 Part no.	Brass Part no.	Stainless Part no.
M3										
M4										
M5 No 10-32 No 10-24	0.7-2.5	8.0	14.5	9.0	0.50	9.5	HT5M-25hTS/KN	AVAILABLE SOON	--	--
	2.5-4.0	8.0	16.0	9.0	0.50	9.0	HT5M-40hTS/KN	AVAILABLE SOON	--	--
M6 1/4-20 1/4-28	1.0-3.0	9.0	18.0	10.0	0.50	11.0	HT6M-30hTS/KN	AVAILABLE SOON	--	--
	3.0-5.0	9.0	20.0	10.0	0.50	11.0	HT6M-50hTS/KN	AVAILABLE SOON	--	--
M8 5/16-18 5/16-24	1.5-4.0	11.0	22.0	12.0	0.60	13.5	HT8M-40hTS/KN	AVAILABLE SOON	--	--
	4.0-6.0	11.0	24.0	12.0	0.60	13.5	HT8M-60hTS/KN	AVAILABLE SOON	--	--
	6.0-8.0	11.0	26.0	12.0	0.60	13.5	HT8M-80hTS/KN	AVAILABLE SOON	--	--
M10 3/8-16 3/8-24	2.0-5.0	14.0	27.0	14.0	0.60	18.0	HT10M-50hTS/KN	AVAILABLE SOON	--	--
	4.5-7.0	14.0	29.0	14.0	0.60	18.0	HT10M-70hTS/KN	AVAILABLE SOON	--	--
	6.5-9.0	14.0	31.0	14.0	0.60	18.0	HT10M-90hTS/KN	AVAILABLE SOON	--	--

Authorised UK distributors for: