



BCT Multigrip Large Flange Nutserts

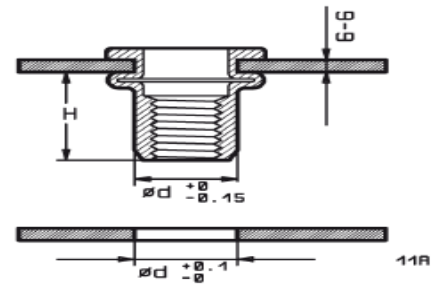
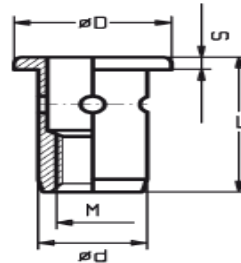
DATA SHEET D 101

LARGE FLANGE HEAD
Type: LF-BCT

BCT- MULTIGRIP

G-G

other grip ranges can be manufactured on request



All dimensions in metric

Dimensions with part number in bold are stock items

M Thread	G-G Grip range	ød	L	øD	S	H Ca.	Steel Part no.	Aluminium Part no.	Brass Part no.	Stainless Part no.
M3										
M4	0.5-4.0	7.0	14.0	10.0	0.80	8.0	T4M-040.25LF	A4M-040.25LF	B4M-040.25LF	E4M-040.25LF
	2.5-5.5	7.0	15.5	10.0	0.80	8.0	T4M-055.37LF	A4M-055.37LF	B4M-055.37LF	E4M-055.37LF
	4.0-7.0	7.0	17.0	10.0	0.80	8.0	T4M-070.49LF	A4M-070.49LF	B4M-070.49LF	E4M-070.49LF
M5	0.5-5.0	8.0	17.0	11.0	1.00	9.5	T5M-050.29LF	A5M-050.29LF	B5M-050.29LF	E5M-050.29LF
	3.0-7.0	8.0	19.0	11.0	1.00	9.5	T5M-070.43LF	A5M-070.43LF	B5M-070.43LF	E5M-070.43LF
M6	0.5-4.5	9.0	17.5	13.0	1.50	10.5	T6M-045.33LF	A6M-045.33LF	B6M-045.33LF	E6M-045.33LF
	0.5-6.0	9.0	19.5	13.0	1.50	10.5	T6M-060.33LF	A6M-060.33LF	B6M-060.33LF	E6M-060.33LF
	4.0-9.0	9.0	22.5	13.0	1.50	10.5	T6M-090.61LF	A6M-090.61LF	B6M-090.61LF	E6M-090.61LF
M8	0.5-6.0	11.0	20.5	16.0	1.50	12.0	T8M-060.43LF	A8M-060.43LF	B8M-060.43LF	E8M-060.43LF
	0.5-8.0	11.0	23.0	16.0	1.50	12.0	T8M-080.47LF	A8M-080.47LF	B8M-080.47LF	E8M-080.47LF
	4.5-11.0	11.0	26.0	16.0	1.50	12.0	T8M-110.77LF	A8M-110.77LF	B8M-110.77LF	E8M-110.77LF
	6.5-13.0	11.0	28.0	16.0	1.50	12.0	T8M-130.97LF	A8M-130.97LF	B8M-130.97LF	E8M-130.97LF
M10	0.8-7.0	13.0	26.0	19.0	2.00	16.0	T10M-070.50LF	A10M-070.50LF	B10M-070.50LF	E10M-070.50LF
	1.5-10.0	13.0	30.0	19.0	2.00	16.0	T10M-100.60LF	A10M-100.60LF	B10M-100.60LF	E10M-100.60LF
	5.5-14.0	13.0	34.0	19.0	2.00	16.0	T10M-140.100LF	A10M-140.100LF	B10M-140.100LF	E10M-140.100LF
M12	1.0-8.0	16.0	31.0	23.0	2.00	19.0	T12M-080.50LF	A12M-080.50LF	B12M-080.50LF	E12M-080.50LF
	2.0-12.0	16.0	35.0	23.0	2.00	19.0	T12M-120.70LF	A12M-120.70LF	B12M-120.70LF	E12M-120.70LF
	8.0-18.0	16.0	41.0	23.0	2.00	19.0	T12M-180.120LF	A12M-180.120LF	B12M-180.120LF	E12M-180.120LF

Authorised UK distributors for: