



BCT Countersunk Knurled Multigrip Nutserts

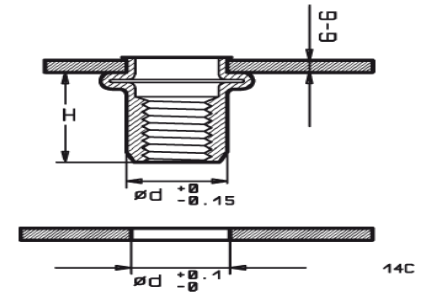
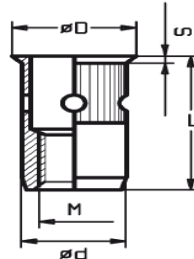
DATA SHEET D 115

SMALL COUNTERSUNK HEAD
Type: **TS/KN-BCT**

BCT- MULTIGRIP

G-G

other grip ranges can be manufactured on request



All dimensions in metric

Dimensions with part number in bold are stock items

| M Thread | G-G Grip range | ød | L | øD | S | H Ca. | Steel Part no. | Aluminium Part no. | Brass Part no. | Stainless Part no. |
|------------|----------------|------|------|------|------|-------|-------------------------|-------------------------|-------------------------|-------------------------|
| M3 | | | | | | | | | | |
| M4 | 0.5-4.0 | 7.0 | 13.5 | 8.0 | 0.50 | 8.0 | T4M-040.25TS/KN | A4M-040.25TS/KN | B4M-040.25TS/KN | E4M-040.25TS/KN |
| | 2.5-5.5 | 7.0 | 15.0 | 8.0 | 0.50 | 8.0 | T4M-055.37TS/KN | A4M-055.37TS/KN | B4M-055.37TS/KN | E4M-055.37TS/KN |
| | 4.0-7.0 | 7.0 | 16.5 | 8.0 | 0.50 | 8.0 | T4M-070.49TS/KN | A4M-070.49TS/KN | B4M-070.49TS/KN | E4M-070.49TS/KN |
| M5 | 0.5-5.0 | 8.0 | 16.0 | 9.0 | 0.50 | 9.0 | T5M-050.29TS/KN | A5M-050.29TS/KN | B5M-050.29TS/KN | E5M-050.29TS/KN |
| | 3.0-7.0 | 8.0 | 18.0 | 9.0 | 0.50 | 9.0 | T5M-070.43TS/KN | A5M-070.43TS/KN | B5M-070.43TS/KN | E5M-070.43TS/KN |
| M6 | 0.5-4.5 | 9.0 | 16.0 | 10.0 | 0.50 | 10.0 | T6M-045.33TS/KN | A6M-045.33TS/KN | B6M-045.33TS/KN | E6M-045.33TS/KN |
| | 0.5-6.0 | 9.0 | 17.5 | 10.0 | 0.50 | 10.0 | T6M-060.33TS/KN | A6M-060.33TS/KN | B6M-060.33TS/KN | E6M-060.33TS/KN |
| | 4.0-9.0 | 9.0 | 21.0 | 10.0 | 0.50 | 10.0 | T6M-090.61TS/KN | A6M-090.61TS/KN | B6M-090.61TS/KN | E6M-090.61TS/KN |
| M8 | 0.5-6.0 | 11.0 | 19.5 | 12.0 | 0.60 | 12.0 | T8M-060.41TS/KN | A8M-060.41TS/KN | B8M-060.41TS/KN | E8M-060.41TS/KN |
| | 0.5-8.0 | 11.0 | 21.5 | 12.0 | 0.60 | 12.0 | T8M-080.45TS/KN | A8M-080.45TS/KN | B8M-080.45TS/KN | E8M-080.45TS/KN |
| | 4.0-11.0 | 11.0 | 25.0 | 12.0 | 0.60 | 12.0 | T8M-110.70TS/KN | A8M-110.70TS/KN | B8M-110.70TS/KN | E8M-110.70TS/KN |
| | 6.5-13.0 | 11.0 | 27.0 | 12.0 | 0.60 | 12.0 | T8M-130.88TS/KN | A8M-130.88TS/KN | B8M-130.88TS/KN | E8M-130.88TS/KN |
| M10 | 0.8-7.0 | 13.0 | 25.0 | 14.0 | 0.60 | 16.0 | T10M-070.48TS/KN | A10M-070.48TS/KN | B10M-070.48TS/KN | E10M-070.48TS/KN |
| | 1.5-10.0 | 13.0 | 28.0 | 14.0 | 0.60 | 16.0 | T10M-100.58TS/KN | A10M-100.58TS/KN | B10M-100.58TS/KN | E10M-100.58TS/KN |
| | 5.5-14.0 | 13.0 | 32.0 | 14.0 | 0.60 | 16.0 | T10M-140.98TS/KN | A10M-140.98TS/KN | B10M-140.98TS/KN | E10M-140.98TS/KN |
| M12 | 1.0-8.0 | 16.0 | 29.0 | 17.2 | 0.65 | 19.0 | T12M-080.50TS/KN | A12M-080.50TS/KN | B12M-080.50TS/KN | E12M-080.50TS/KN |
| | 2.0-12.0 | 16.0 | 32.0 | 17.2 | 0.65 | 19.0 | T12M-120.70TS/KN | A12M-120.70TS/KN | B12M-120.70TS/KN | E12M-120.70TS/KN |
| | 8.0-18.0 | 16.0 | 38.0 | 17.2 | 0.65 | 19.0 | T12M-180.120TS/KN | A12M-180.120TS/KN | B12M-180.120TS/KN | E12M-180.120TS/KN |

Authorised UK distributors for: